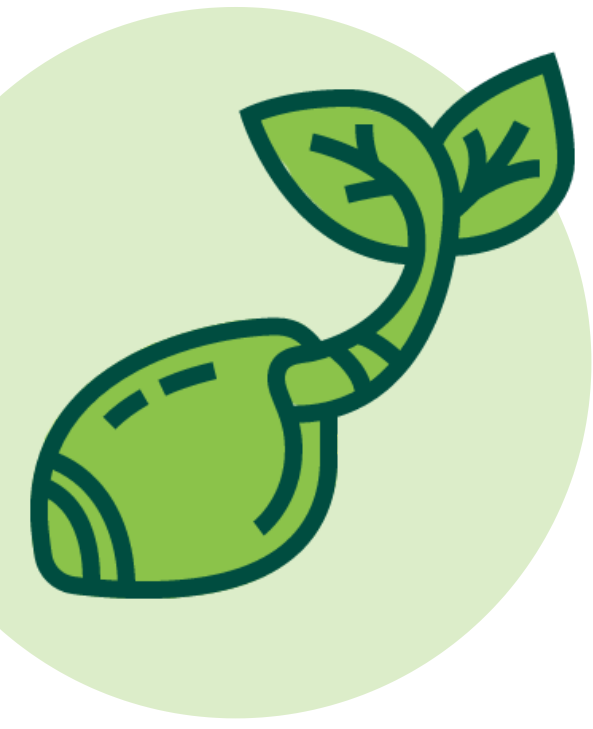


WEED GROWING TIMELINE

THE AVERAGE INDOOR GROW TAKES 3-5 MONTHS



STAGE 1: GERMINATION

Germinate seeds. Keep them warm and moist but not soaking.

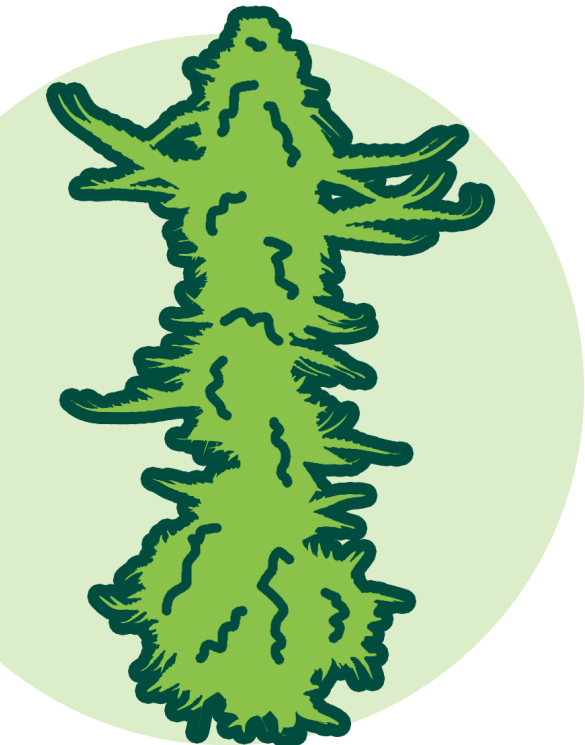
STAGE 2: VEGETATIVE

Plants grow only leaves and stems. Water regularly. Wait until they reach about 1/2 their final size.



STAGE 3: FLOWERING

Plants make flowers (buds). Initiate flowering by putting grow lights on a 12/12 light schedule with a timer. Plants about double in size.



STAGE 4: HARVEST

Harvest when buds darken and curl in. Dry in a cool place then put buds in jars. Bud quality improves for several weeks.

